



Shandaweel Women Tally fabric issue : Four step solution

This is the four step solution for problem statement 1: Shandaweel Women are known for their crafting skills; especially the crafting of a beautiful Al-Tally fabric. However, The women are not able to reach a proper market to attract customers and show case their product that will help in achieving financial sustainability.

 Difficulty Easy

 Duration 2 day(s)

 Categories Art, Clothing & Accessories

 Cost 0 USD (\$)

Contents

Video overview

Step 1 - challenges

Step 2 - steps taken for the hackathon

Step 3 - the solution: four step solution

Step 4 - Implementation

Step 5 - the full model

Step 6 - video presentation


Comments

Materials

Tools

Step 1 - challenges

https://wikifab.org/wiki/Fichier:Shandaweel_Women_Tally_fabric_issue_-_Four_step_solution_WhatsApp_Video_2020-12-12_at_9.09.20_PM.mp4

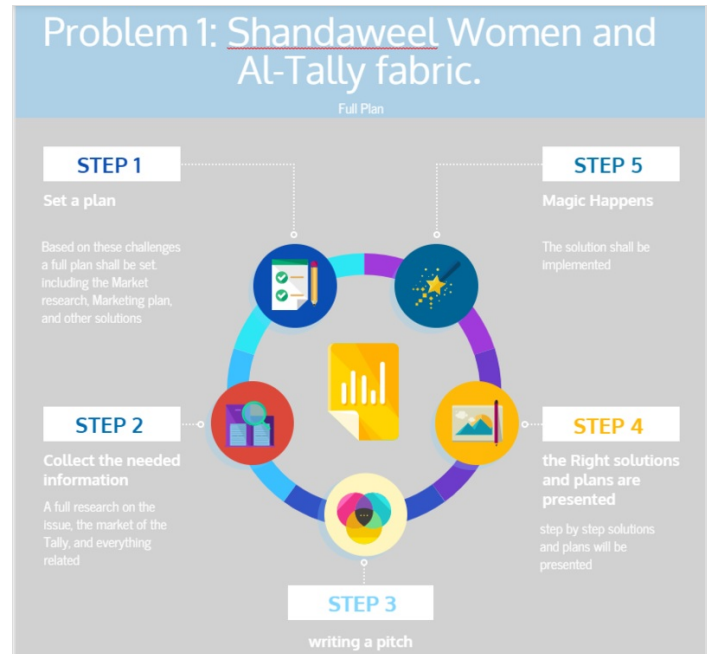


Challenges

- 1 There are limited resources (strings, silver, gold, fabric, etc). Strings are sold only in India and Germany
- 2 There is only one supplier for strings and one factory for fabric, yet they sell the material with a high price
- 3 The women are not well educated
- 4 Women compete with each other through price. Some try to control the market

Step 2 - steps taken for the hackathon

https://wikifab.org/wiki/Fichier:Shandaweel_Women_Tally_fabric_issue_-_Four_step_solution_WhatsApp_Video_2020-12-12_at_9.09.28_PM.mp4



Step 3 - the solution: four step solution

https://wikifab.org/wiki/Fichier:Shandaweel_Women_Tally_fabric_issue_-_Four_step_solution_WhatsApp_Video_2020-12-12_at_9.14.02_PM_1_.mp4



Step 4 - Implementation

Step 5 - the full model

Fichier:Shandaweel Women Tally fabric issue - Four step solution
Hackathon final project.docx

Step 6 - video presentation

https://wikifab.org/wiki/Fichier:Shandaweel_Women_Tally_fabric_issue_-_Four_step_solution_video_1_2_.mp4 - https://wikifab.org/wiki/Fichier:Shandaweel_Women_Tally_fabric_issue_-_Four_step_solution_video_2.mp4
