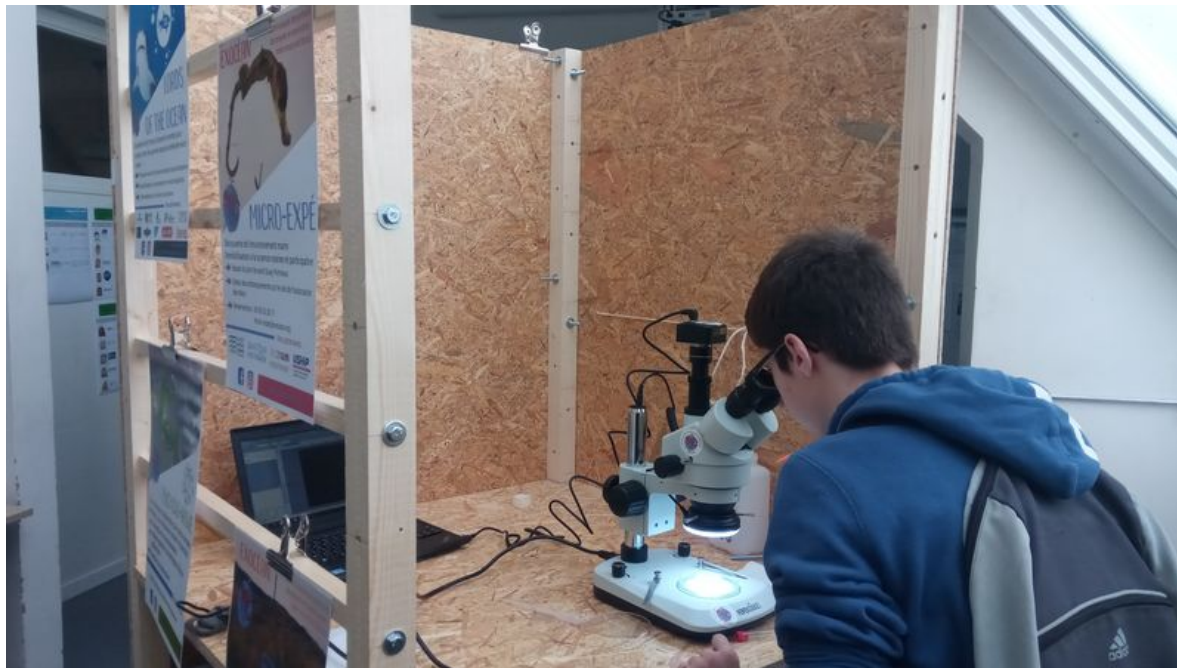


# Fichier:Scénographie modulaire et démontable IMG 20190209 150538.jpg




Size of this preview:800 × 450 pixels.

Original file (5,376 × 3,024 pixels, file size: 3.71 MB, MIME type: image/jpeg)

Scénographie\_modulaire\_et\_démontable\_IMG\_20190209\_150538

## File history

Click on a date/time to view the file as it appeared at that time.

	Date/Time	Thumbnail	Dimensions	User	Comment
current	13:02, 3 May 2019		5,376 × 3,024 (3.71 MB)	Guillaume Leguen (talk   contribs)	Scénographie_modulaire_et_démontable_IMG_20190209_150538

You cannot overwrite this file.

## File usage

There are no pages that link to this file.

## Metadata

This file contains additional information, probably added from the digital camera or scanner used to create or digitize it. If the file has been modified from its original state, some details may not fully reflect the modified file.

Camera manufacturer	Blackview
Camera model	BV8000Pro
Exposure time	2,277/250,000 sec (0.009108)
F Number	f/2
ISO speed rating	115
Date and time of data generation	15:05, 9 February 2019
Lens focal length	3.5 mm
Orientation	Normal
Horizontal resolution	72 dpi
Vertical resolution	72 dpi
Software used	MediaTek Camera Application
File change date and time	15:05, 9 February 2019
Y and C positioning	Co-sited
Exposure Program	Not defined
Exif version	2.2
Date and time of digitizing	15:05, 9 February 2019

Meaning of each component	1. Y 2. Cb 3. Cr 4. does not exist
APEX exposure bias	0
Metering mode	Center weighted average
Light source	Other light source
Flash	Flash did not fire
DateTime subseconds	47
DateTimeOriginal subseconds	47
DateTimeDigitized subseconds	47
Supported Flashpix version	0,100
Color space	sRGB
Exposure mode	Auto exposure
White balance	Auto white balance
Digital zoom ratio	1
Scene capture type	Standard