



How to use the Multimeter

A tutorial about the usage of the multimeter.

 Difficulté Très facile

 Durée 5 minute(s)

 Catégories Électronique

 Coût 12 USD (\$)

Sommaire

Introduction

Étape 1 - Before using the multimeter, perform "zero adjustment".

Étape 2 - When there is no measured power, make the pointer of the multimeter point to the position of zero voltage or zero current.

Étape 3 - The multimeter must be placed horizontally when used to avoid errors.

Étape 4 - Do not touch the metal part of the test lead with your hands to ensure accurate measurement and personal safety.

Étape 5 - When measuring a certain amount of electricity, especially for high voltage or large current, you cannot shift gears while measuring, otherwise the multimeter will be damaged.

Étape 6 - If there is a need to shift gears, disconnect the test leads first and then shift gears for next measurement.

Étape 7 - After the multimeter is used, set the transfer switch to the maximum block of AC voltage.

Étape 8 - If the multimeter is not used for a long time, take out the battery inside the multimeter.

Notes et références

Commentaires

Introduction

The household appliances in your home sometimes have a short circuit. Under the circumstances , you need to use a multimeter to detect it. So in the following, I'll introduce to you about the usage of the multimeter. I hope it can help you.

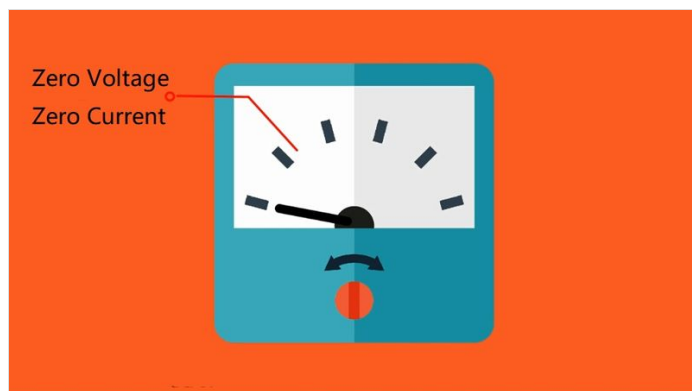
Matériaux

Étape 1 - Before using the multimeter, perform "zero adjustment".

Outils



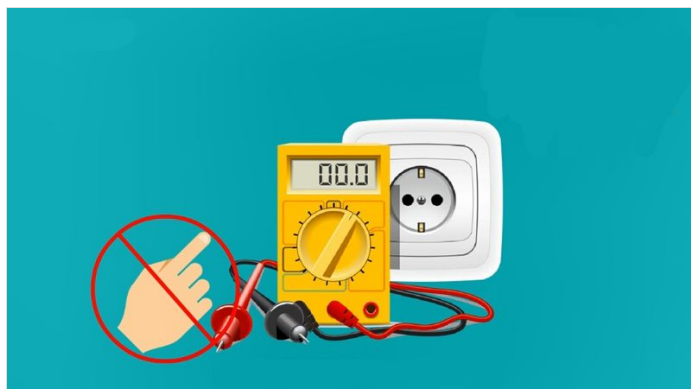
Étape 2 - When there is no measured power, make the pointer of the multimeter point to the position of zero voltage or zero current.



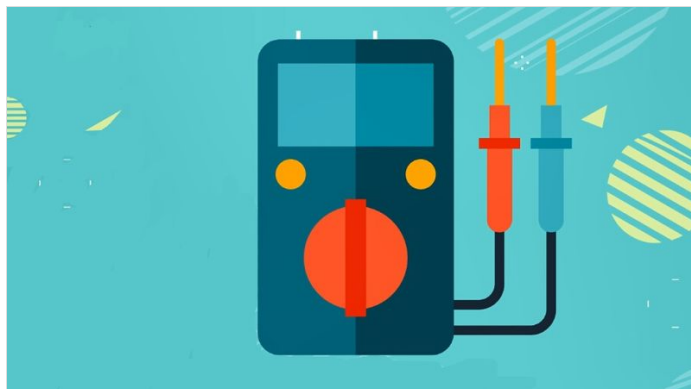
Étape 3 - The multimeter must be placed horizontally when used to avoid errors.



Étape 4 - Do not touch the metal part of the test lead with your hands to ensure accurate measurement and personal safety.



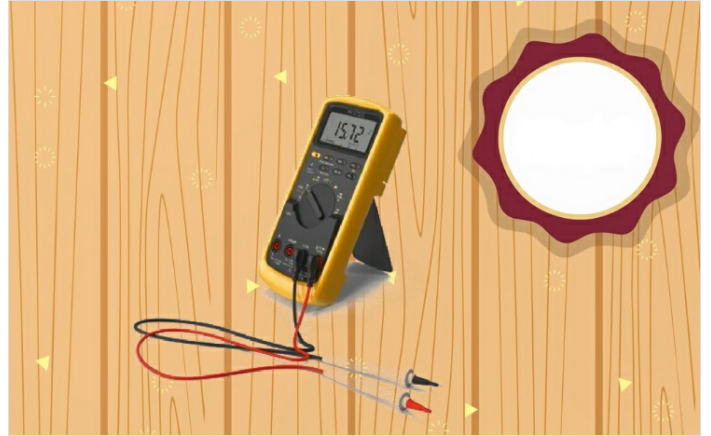
Étape 5 - When measuring a certain amount of electricity, especially for high voltage or large current, you cannot shift gears while measuring, otherwise the multimeter will be damaged.



Étape 6 - If there is a need to shift gears, disconnect the test leads first and then shift gears for next measurement.



Étape 7 - After the multimeter is used, set the transfer switch to the maximum block of AC voltage.



Étape 8 - If the multimeter is not used for a long time, take out the battery inside the multimeter.



Notes et références

Related Source:

Test Resistors with the Multimeter